



# SPRING SUMMER STYLE EDIT



Model wears Specsavers Harrow 30690691  
2 pairs single vision \$459

## MEDIA RELEASE

Be bold when it comes to eyewear and let your shades do the talking this season.

Whether you're looking for optical or prescription sun, it's all about attitude and bringing out your individual style with an accessory that does so much more than just look good - it helps you to see after all.

From bold shapes and strong silhouettes, to pastel tones or aviator styles, why not choose an adventurous frame along with a modern classic or an optical paired with a prescription sun in a two pair approach to your spec style?

With so many fresh new styles in store, we're here to help you update your look as we step into the warmer months.

## FEATURED FRAME



**SPECSAVERS HARROW**  
30690691  
2 pairs single vision \$459

Beautiful brown and peach tortoiseshell clip-on sunglasses with an on-trend rose gold metal clip-on and polarised, peach mirrored lenses.

## Media Contacts

**Katy Hughes**  
katyh@  
thisismango.co.nz  
09 306 0932

**Jessica Crosswell**  
jessicac@  
thisismango.co.nz  
09 306 0962

**Anri McHugh**  
anri.mchugh@  
specsavers.com  
+ 61 (0) 3 9091 8950

**Georgina Dawson**  
georgina.dawson@  
specsavers.com  
+ 61 (0) 3 8532 8669

\*Prices correct at the time of distribution. Frames available while stocks last. \*All glasses are priced complete with single vision lenses

T R E N D

# CLIP AND GO

You probably knew someone who owned clip-on sunnies back in the '90s. Well, they're back, and just in time for summer.

Check out our clip-on combination frames, set to transform your glasses into prescription sunglasses instantly to give you two looks in one pair.



Model wears Specsavers Enfield 30690721  
2 pairs single vision \$459



**SPECSAVERS ENFIELD**  
30690721  
2 pairs single vision \$459

These sunglasses give you two different looks from the brown and silver flat sheet metal Clubmaster-style glasses to the Aviator-style silver metal clip-on with polarised, silver mirrored lenses.



**SPECSAVERS ISLINGTON**  
30690714  
2 pairs single vision \$459

Gold metal clip-on sunglasses with polarised, pink, gold and purple mirrored lenses. The glasses frame beneath is made from a glossy pink and brown tortoiseshell acetate.



**SPECSAVERS LEWISHAM**  
30690745  
2 pairs single vision \$459

These dark blue acetate glasses have a light Havana ombré effect on the round lenses and a keyhole bridge. The design is enhanced by the silver metal sunglasses clip-on with polarised, blue mirrored lenses.



**SPECSAVERS BROMLEY**  
30690738  
2 pairs single vision \$459

Square-shaped glasses in a dark green acetate front with bronze metal detail on the sides. The silver metal sunglasses clip-on features brown polarised lenses.



**SPECSAVERS KINGSTON**  
30690752  
2 pairs single vision \$459

Glossy black glasses featuring a keyhole nose bridge and double stud accents. Add to the style with gunmetal grey clip-on sunglasses and grey tinted lenses.



**SPECSAVERS LAMBETH**  
30690707  
2 pairs single vision \$459

Shiny brown tortoiseshell clip-on sunglasses with dark-gold satin metal sides. The clip-on is made of gold-metal with brown polarised lenses.





**COUNTRY ROAD 45**  
30508323  
2 pairs single vision \$369

Beautifully crafted from transparent rose-pink acetate, these Country Road glasses have an elegant rectangular shape with a softly curved top brow line for added femininity.



**SPECSAVERS SIREN**  
30719125  
2 pairs single vision \$459

Like the siren's call, eyes will draw to these striking, square glasses in crystal pink acetate, with contrasting printed sides in a floral pattern featuring accents of purple and coral pink.



**ALEX PERRY 59**  
30571884  
2 pairs single vision \$369

Petrol-blue, transparent acetate glasses by Alex Perry with an ombre effect to grey at the front and diamante detail at the brow. The beautifully blended pink and purple arms complement the overall look.



**ELLERY 13**  
30474758  
2 pairs single vision \$369

ELLERY reinvents a classic silhouette with these always-stylish, round glasses with an exaggerated brow bar. The acetate frame has a subtle, translucent effect that reveals the metal structure within for an industrial touch.

## TREND SHEER GLAMOUR

Don't be shy. Set the trend with divinely refined silhouettes and daring see-through hues across our most glamorous translucent styles.

As an alternative to classic black, translucent frames offer a subtle approach that will soften up your look. These translucent styles are a perfect option as the days become warmer and your wardrobe becomes lighter.



**KYLIE 08**  
30520219  
2 pairs single vision \$459

Let out your inner showgirl with this smoky grey frame embellished with delicate, tonal Swarovski® crystals for a touch of subtle bling, and funky patterned temple tips.



T R E N D

# RETRO VISION

The fashion pack is going crazy for retro when it comes to eyewear this season.

Tortoiseshell comes out top again – we'll show you a whole new take on this classic style that we know you'll love. The iconic round shape in a pair of glasses has versatile appeal with enough character to transition it easily from work to the weekend.

Over the decades this style has become a firm favourite. Whether you prefer a thin wire design, tortoiseshell or shiny black acetate, the ever popular round-eye shows no sign of budging this season.



**SCANDIMANIA SISU**  
30689787  
2 pairs single vision \$169



**SCANDIMANIA HUMPPA**  
30689831  
2 pairs single vision \$169

These sleek, antique gunmetal frames have a quirky, angular shape with a high bridge and perfectly offset by tortoiseshell sides in acetate.

Like the siren's call, eyes will Quirky round glasses that widen at the corners to draw attention to the eyes. Made from strong, acetate with a stylish translucent effect and finished with temple tip detail.



**SPECSAVERS TOKYO**  
30516311  
2 pairs single vision \$459

These hip round lenses are slightly wider at the top than the bottom and are outlined by a thin frame made from dappled brown acetate. Prominent corners add a horn-rimmed look to the frames, creating a hipster vibe. Small metal accents draw attention to the edges, making your eyes seem larger.



**TOMMY HILFINGER 92**  
30706026  
2 pairs single vision \$459

Unmistakeably retro, these Tommy Hilfiger glasses prove you can't go wrong with a classic. An on-trend round shape makes a statement in jet-black acetate, with matching ultra-slim metal sides and comfy acetate tips. A keyhole bridge and tri-colour detail on the sides add that perfect finishing touch.



**SPECSAVERS HUEY**  
30564169  
2 pairs single vision \$369

They're called classic for a reason, right? Huey proves you can't go too far wrong with its classic round shape and shiny tortoiseshell pattern in comfy acetate, perfectly finished with silver pin detail on the front.

**STYLE TIP:**  
ROUND FRAMES HAVE HAD A HUGE RESURGENCE IN POPULARITY. THEY SOFTEN ANGULAR, SQUARE OR OBLONG FACES AND ALSO SUIT HEART-SHAPED FACES. PAIR THESE GLASSES WITH SOME THRIFT-STORE FINDS AND YOUR VINTAGE-INSPIRED OUTFIT WILL BE COMPLETE.



Model wears Specsavers Ray 30564237  
2 pairs single vision \$369

TREND

# AVIATOR

The Aviator inspired frames are here to stay and here are some of our favourite styles in store this season.



**SPECSAVERS ANDY**

21051111

2 pairs single vision \$169

Whether work or weekend, give your look a touch of metallic chic with these classic glasses. The Aviator-inspired shape has been given a stylish update in super-thin stainless steel with softly curved edges. In gleaming gold, they perfect the balance between smart and casual by making a subtle, timeless statement.



**ELLERY 14**

30566392

2 pairs single vision \$369

ELLERY has repurposed the classic Aviator shape into a striking pair of glasses, mixing old and new with ease. The iconic silhouette is crafted from slim, silver metal with contrasting acetate tips in a beautiful mineral pattern with flecks of brown, amber and pearlescent white.



**SPECSAVERS KAWAKUBO**

30516342

2 pairs single vision \$459

Fly high in these oversized, Aviator-inspired glasses. Revive a legendary pilot favourite with a timeless frame layout and a sweeping, exaggerated shape. The metal construction has a refined champagne gold tone, perfect for capturing a luxurious look. The classic double bridge adds a heritage detail that you just can't go past.



**WILL.I.AM W09V**

30715479

2 pairs single vision \$369

A futuristic twist on the iconic Aviator look, this gold and black frame uses flat sheet metal to create a lightweight but also strong frame with the classic double bridge.



**SPECSAVERS SNOOKER**

21665127

2 pairs single vision \$459

Combine the 80s trend with modern masculinity in these bold glasses. Elevating the iconic Aviator style, these glasses have a striking double top bar and squared-off, teardrop-shaped rims.



**KYLIE NEVER TOO LATE**

30715677

2 pairs single vision \$369

Retro nostalgia meets modern detail in this twist on the classic Aviator shape. Delicate rose-gold metal pairs with dusty pink translucent sides featuring luxurious flecks of pearl and shimmering metal.



**CARLA ZAMPATTI 03**

30609174

2 pairs single vision \$459

Rose-gold metal is used to full effect with these beautiful round-eye glasses by Carla Zampatti. Featuring slim rims and a double bridge, the style continues along the temples and down the complementary sides in acetate.

TREND

# THROWING SHADE

Whether it's our new range of '90s clip-on sunnies, or the acetate keyhole specs stolen straight from the '60s, this season's sunglasses are inspired by key vintage styles.

Have a little sass this Spring/Summer and show us your attitude with these styles that are sure to have you turning heads.



**WILL.I.AM W16S SUN RX**  
30715530  
2 pairs single vision \$459

An innovative twist on the favourite Aviator style, with round frames and double bridge in a matte, flat-sheet silver metal.



**WILL.I.AM W17S SUN RX**  
30715554  
2 pairs single vision \$369

This fashion-forward, glossy acetate frame takes a simple black sunglass and enhances it with half-matte lenses, keyhole bridge and tapered temples for an understated but cool look.



**COUNTRY ROAD SUN RX 25**  
30518209  
2 pairs single vision \$459

For the ultimate fun-in-the sun style, try these Aviator-inspired Country Road sunglasses. The iconic silhouette is crafted from thin, rose-gold metal for a feminine flair, with simple etched branding on the sides and finished with tortoiseshell tips in acetate.



**ALEX PERRY SUN RX 41**  
30609433  
2 pairs single vision \$369

Beautiful clear acetate Alex Perry sunglasses with a hint of black and white cat print at the brow and lower rim of the cat's eye shaped front.



**ALEX PERRY MEN SUN RX 08**  
30609464  
2 pairs single vision \$369

Aviator-inspired Alex Perry sunglasses in a gold metal with traditional double-bridge and etched finish at the temples. The arms are finished in a black acetate.



T R E N D

# CAT'S EYE

Upswept and feminine in shape, the flattering cat's eye frame became popular in the 50's and 60's thanks to Hollywood stars like Marilyn Monroe and Audrey Hepburn.

This summer is an homage to ice-cream hues. Combine layers of clothing and accessories in sugary tones for a look that's pale and interesting. Winter's decadent purple has been traded in for its candy-coloured summer cousin, violet – the perfect hue in your next pair of glasses ready for summer romance.



**SPECSAVERS GENIE**

30719149

2 pairs single vision \$459

Make a statement wearing these beautifully feminine cat's eye glasses. The front is made from crystal acetate in a lovely lilac purple colour, while the sides feature a pretty flower pattern in pink.



**CARLA ZAMPATTI 01**

30609143

2 pairs single vision \$459

These deep-lensed glasses have a subtle cat's eye shape and stepped arms. Carla Zampatti adds her branding at the temples and subtle diamond detail at the front of the acetate finish.



**COLLETTE DINNIGAN 49**

30571464

2 pairs single vision \$369

Beautifully feminine, these round glasses are slightly upswept for a subtle hint of cat's eye. This simple design is crafted from slender, acetate with gold metal embellishments at the hinge to accentuate the unique textured detail.



**SPECSAVERS PETUNIA**

30549791

2 pairs single vision \$369

Dark brown tortoiseshell glasses go tropical with bright flecks of gold and purple through the teacup-shaped front and sides of this acetate frame.



**SPECSAVERS SPRITE**

30687134

2 pairs single vision \$459

Beautifully feminine, these cat's eye glasses in glossy acetate are softened with its pretty brown and pale blue front and light pink, crystal-clear sides that reveal the delicate metal structure within.

T R E N D

# CLUBMASTER

The Clubmaster is another retro favourite that has made a big resurgence in recent years.

Clubmaster-inspired glasses are depicted by a bold acetate brow line - think tortoiseshell or jet black, complemented with a slim gold or silver metal lower rim. Make a bold statement with the signature Clubmaster inspired frame and its exaggerated eyebrow bar. Tortoiseshell is as popular now as it was in the roaring '20s. Style this classic pattern with a contemporary twist, such as a matte finish, or in purple or blue.



**WILL.I.AM W06V**

30715448

2 pairs single vision \$459

This clubmaster-inspired frame takes rich tortoiseshell acetate and combines it with slim gold metal lenses for a distinctive but formal look.

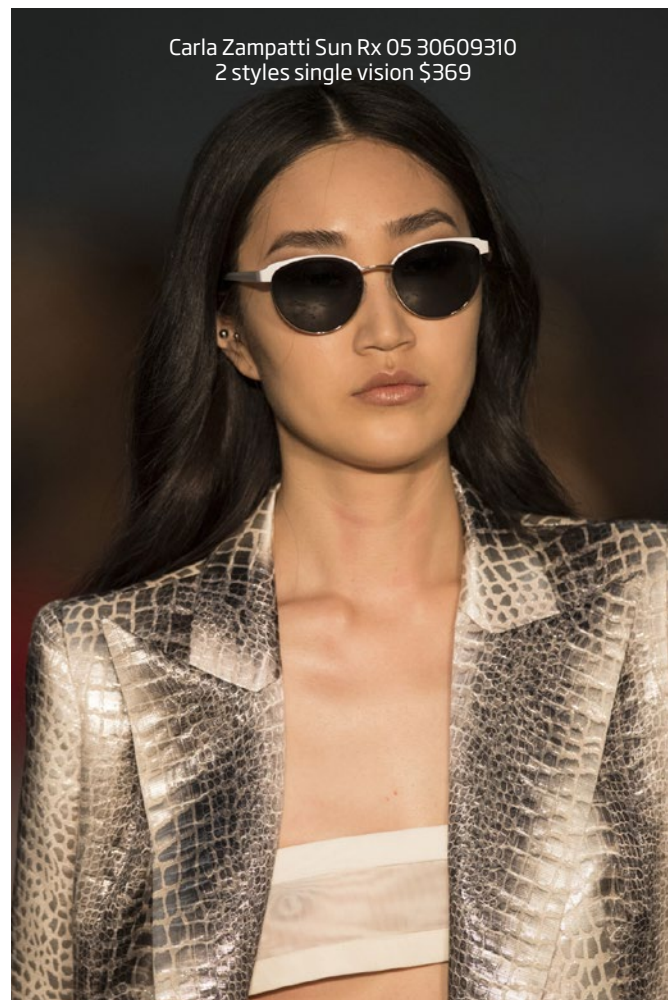


**DIESEL DL5151**

30564930

2 pairs single vision \$459

Clubmaster-inspired design meets with flat, black and silver metal in a polished and matt combination. Stud details take these frames from the boardroom to the biker bar.



**Carla Zampatti Sun Rx 05 30609310**  
2 styles single vision \$369



**CARLA ZAMPATTI SUN RX 05**

30609310

2 pairs single vision \$369

A modern take on a classic Clubmaster style, this frame recently featured heavily at Melbourne Fashion Week. You'll be raising eyebrows with these beautiful white-arched glasses by Carla Zampatti. The classical elegance is enhanced with the gold-metal rims, pearlescent-white acetate arms and subtle branding.



**SPECSAVERS DUVAL**

30549791

2 pairs single vision \$369

Dark brown tortoiseshell glasses go tropical with bright flecks of gold and purple through the teacup-shaped front and sides of this acetate frame.



**SPECSAVERS CALZAGHE**

30293441

2 pairs single vision \$369

These Clubmaster-inspired glasses remain lightweight despite their durable stainless steel construction. The thick, curved upper edge of the frames follows the natural contour of the eye, giving a contemporary look. The block temple shape and glossy finish of the frames lends a touch of 50s chic.





# #LOVEGLASSES

Celebrate your individual style this Spring/Summer by posting your spec selfie to social media with [#LoveGlasses](#) and [@SpecsaversNewZealand](#) for a chance to win a year's supply of glasses, along with a trip to your favourite destination valued at \$5,000 PLUS \$1,000 spending money too! Just from posting a spec selfie.

\$1 from every #LoveGlasses spec selfie will also be donated to The Fred Hollows Foundation, so get posting for a good cause.

---

## Media Contacts

**Katy Hughes**  
katyh@  
thisismango.co.nz  
09 306 0932

**Jessica Crosswell**  
jessicac@  
thisismango.co.nz  
09 306 0962

**Anri McHugh**  
anri.mchugh@  
specsavers.com  
+ 61 (0) 3 9091 8950

**Georgina Dawson**  
georgina.dawson@  
specsavers.com  
+ 61 (0) 3 8532 8669

\*Prices correct at the time of distribution. Frames available while stocks last. \*All glasses are priced complete with single vision lenses